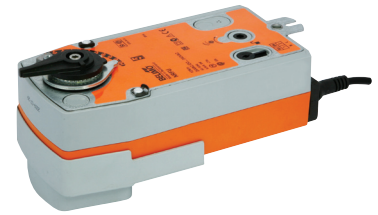


- Mechanical Fail-Safe Rotary Actuators for operation of:
- Torque:
- Modulating control:
- Open/Close control:

DN65...80 CCV
20Nm
SRFU24-SR-5 (AC/DC 24V)
SRFU-5, SRFU-S2-5 (AC 24 ...240V)
(DC 24 ...125V)



Technical data

Basic technical data		Torque	-motor	Min. 20Nm @ nominal voltage
			-spring return	Min. 20Nm
		Angle of rotation		90°
		Direction of rotation	-motor	Selected by mounting side of L/R
			-spring return	Selected by mounting side of L/R or reversing
		Sound power level		Motor: max. 45dB(A), spring return: max. 62dB(A)
		Position indicator		Mechanical
		Running time	-motor	~150s (SRFU24-SR-5); ~75s (SRFU-S2-5, SRFU-5)
			-spring return	~20s @ -20...+50°C
		Ambient temp.		-30...+50°C
		Non-operation temp.		-40...+80°C
		Humidity		5...95% RH, non-condensing
		Degree of protection		IP54
		EMC		CE according to 2004/108/EC
		Low voltage directive		CE according to 2006/95/EC
		Maintenance		Maintenance-free
SRFU24-SR-5		Nominal voltage range		AC 19.2...28.8V, 50/60Hz / DC 21.6...28.8V
		Power consumption	-running	5.5W @ nominal torque
			-holding	3W
		For transformer sizing		8.5VA
		Connecting cable		Cable 1m, 4x0.75mm ²
		Control signal Y		DC (0)2...10V @ input impedance 100kΩ
		Position feedback signal U		DC 2...10V @ max. 0.5mA
		Position accuracy		±5%
		Protection class		III (Extra-low voltage)
		Weight		2.0kg
SRFU-5		Nominal voltage range		AC 19.2...264V, 50/60Hz / DC 21.6...137.5V
		Power consumption	-running	7W @ nominal torque
			-holding	3.5W
		For transformer sizing		18VA
		Connecting cable		Cable 1m, 2x0.75mm ²
		Protection class		III (Extra-low voltage)
		Weight		2.0kg
SRFU-S2-5		Nominal voltage range		AC 19.2...264V, 50/60Hz / DC 21.6...137.5V
		Power consumption	-running	6.5W @ nominal torque
			-holding	3.5W
		For transformer sizing		18VA
		Auxiliary switch (-S2)		2xSPDT, 1mA...3(0.5)A, AC 250V One fixed at 10%, one adjustable 10...90%
		Connecting cable	-motor	Cable 1m, 2x0.75mm ²
			-S2	Cable 1m, 6x0.75mm ²
		Protection class		II (Totally insulated)
		Weight		2.2kg

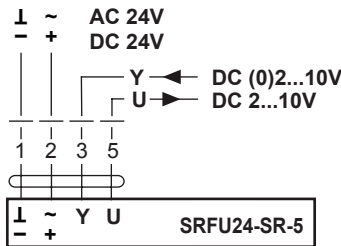
Product features

- Simple direct mounting** Simple direct mounting on the Ball Valve using only one tappet and circlip.
- Manual operation** Manual operation is possible with the manual override key.
- Adjustable angle of rotation** Adjustable angle of rotation with mechanical end stops.
- High function reliability** The actuator is overload-proof, requires no limit switches, and stops automatically when the end stop is reached.

Wiring diagrams

SRFU24-SR-5

Modulating control

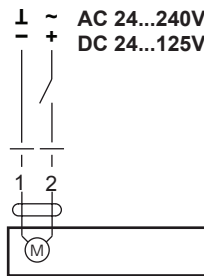


Notes:

- Connection via safety isolating transformer.
 - Other actuators can be connected in parallel.
- Please note the performance data.

SRFU-5

Open/Close control

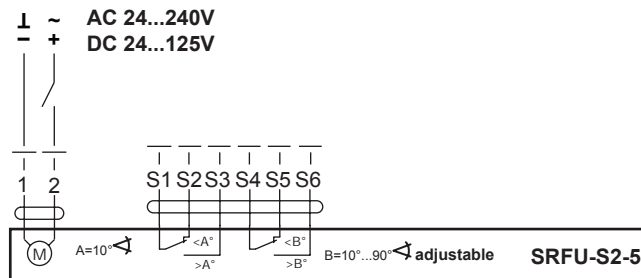


Notes:

- Caution: Power supply voltage!
 - Connection via safety isolating transformer.
 - Other actuators can be connected in parallel.
- Please note the performance data.

SRFU-S2-5

Open/Close control



Notes:

- Caution: Power supply voltage!
 - Connection via safety isolating transformer.
 - Other actuators can be connected in parallel.
- Please note the performance data.

Dimensions [mm]**SRFU...-5**